

EARTH DAY ACTIVITY BOOK



Name _____

WHAT IS IT ABOUT?

Earth Day is an annual event held on April 22 to raise awareness and show support for environmental protection. It has been celebrated since 1970. Every year, there's a wide range of events organized by millions of people from all around the world.

WHY DO YOU THINK IT IS IMPORTANT?

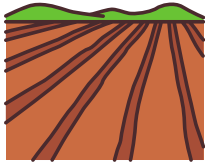




VOCABULARY



water



land



air



recycle



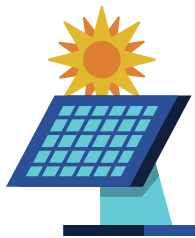
litter



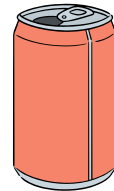
plant



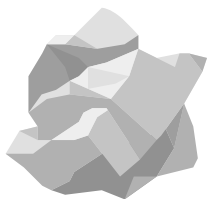
fuel



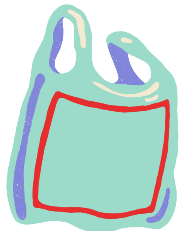
energy



can



paper



plastic



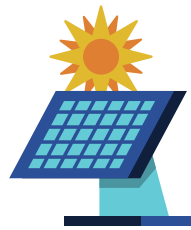
glass

FILL IN THE BLANKS

recycle - water - air - land - plant - litter
fuel - can - energy - paper - glass - plastic



.....



.....



.....



.....



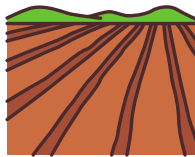
.....



.....



.....



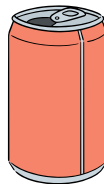
.....



.....



.....



.....



.....

EARTH DAY

WORD SEARCH



| | | | | | | | | | | | | | |
|---|---|---|---|---|---|---|---|---|---|---|---|---|---|
| S | Y | N | E | L | A | R | E | E | N | E | P | R | A |
| R | A | C | U | S | U | L | T | E | A | U | E | P | E |
| F | P | S | A | R | C | B | E | R | E | R | E | E | E |
| E | A | S | N | Y | L | E | P | E | Y | E | T | W | U |
| U | P | N | C | T | R | N | T | E | P | E | T | H | A |
| S | E | E | R | A | C | R | A | E | T | B | E | P | P |
| R | R | A | S | U | S | T | A | I | N | A | B | L | E |
| R | E | P | S | U | C | A | I | E | E | R | R | E | S |
| E | U | E | W | D | E | C | E | E | E | E | E | T | A |
| D | S | A | S | E | C | R | L | P | R | L | T | E | F |
| U | E | F | I | T | G | B | U | E | R | R | A | U | E |
| C | E | C | E | C | R | E | A | S | A | N | W | L | E |
| E | T | N | A | L | P | E | A | R | E | N | E | E | E |
| S | A | C | P | C | A | R | E | H | N | I | U | A | A |

Earth

Green

Clean

Reduce

Recycle

Safe

Sustainable

Care

Plant

Reuse

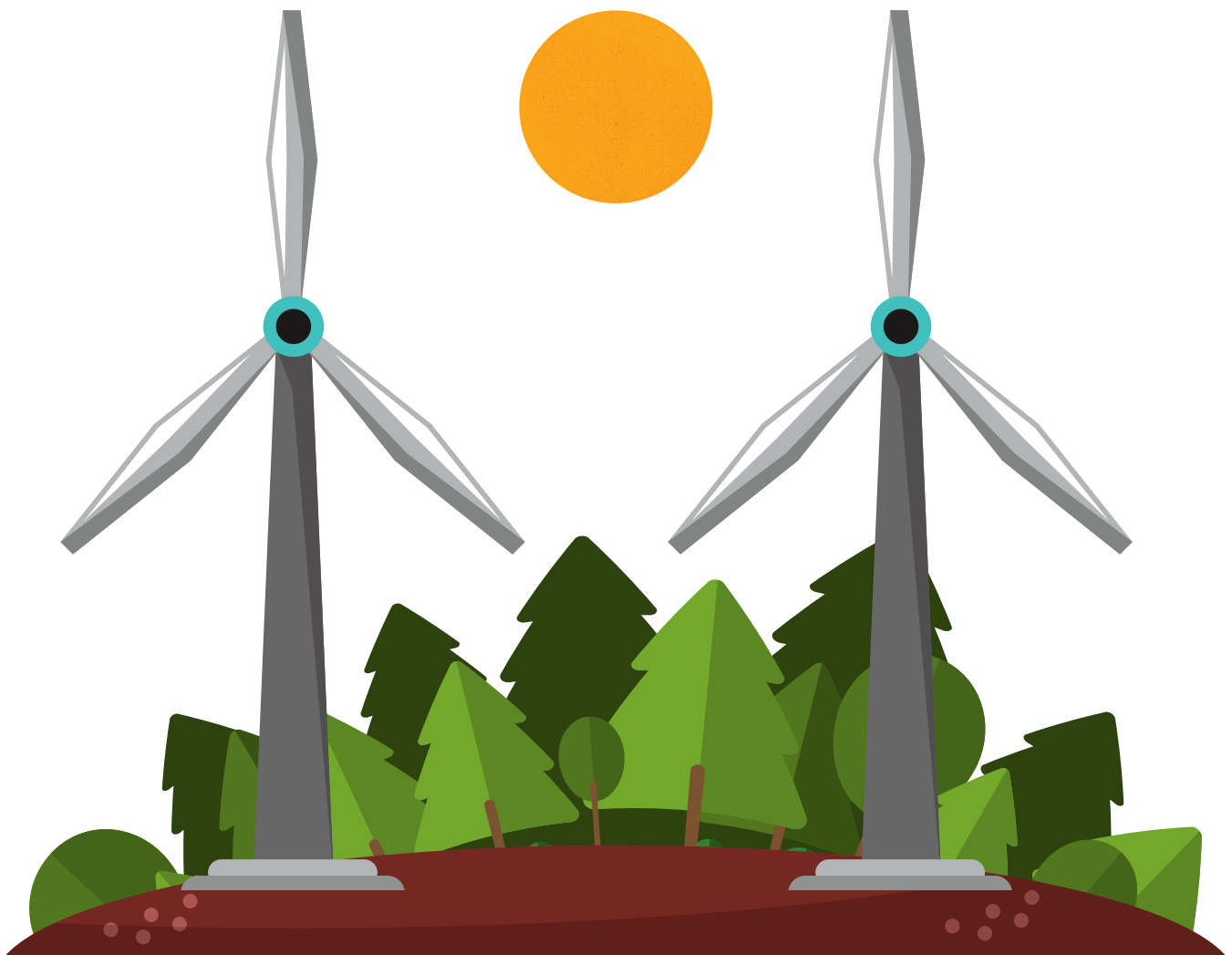
Water

Paper



RENEWABLE RESOURCES

A renewable resource is one that can be used again and again. It does not run out because it is naturally replaced. Examples of renewable resources include solar, wind, hydro and biomass energy.

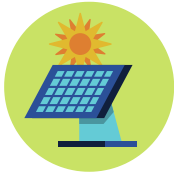


NON-RENEWABLE RESOURCES

A non-renewable resource is one that cannot be replaced naturally at a pace quick enough to keep up with people's consumption. Non-renewable resources include coal, natural gas, oil, and nuclear energy.



RENEWABLE RESOURCES



.....
.....



.....
.....



.....
.....



.....
.....

NON-RENEWABLE RESOURCES



.....
.....



.....
.....



.....
.....

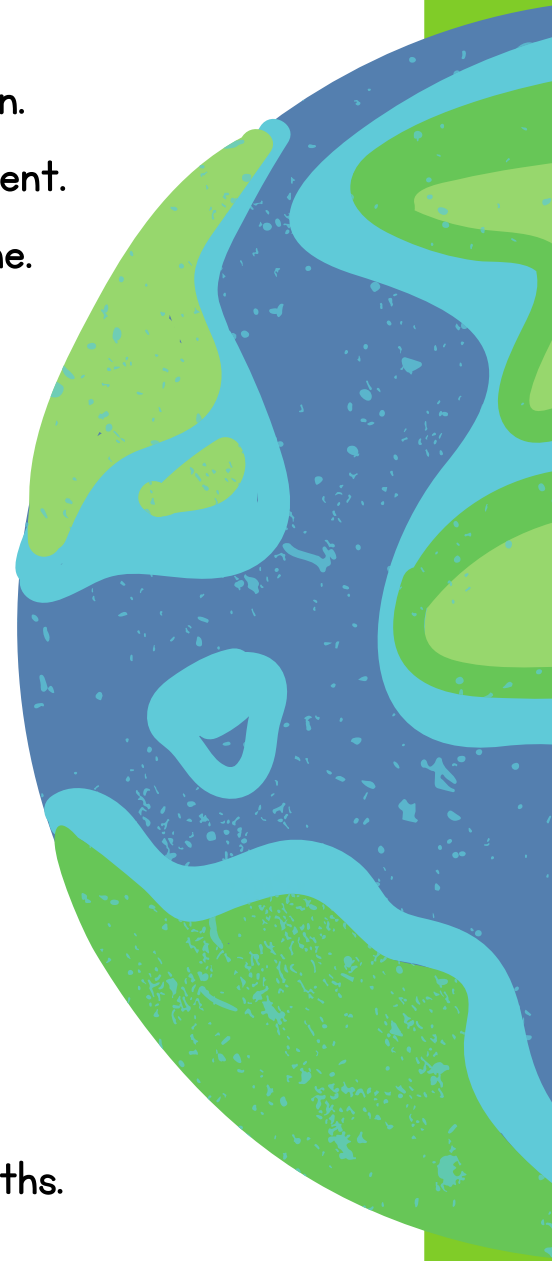


.....
.....

SHOULD OR SHOULDN'T

Fill in the blanks.

- 1- We waste water.
- 2- We recycle more.
- 3- We use the public transportation.
- 4- We stop damaging our environment.
- 5- We keep the lights on all the time.
- 6- We walk and cycle more.
- 7- We cut down the trees.
- 8- We plant more trees.
- 9- We waste paper
- 10- We light campfires.
- 11- We use recycled bags.
- 12- We waste electricity.
- 13- We recycle bottles and cans.
- 14- We sort the garbage.
- 15- We use eco-friendly products.
- 16- We save energy.
- 17- We have showers instead of baths.
- 18- We buy and use plastic.
- 19- We turn off the tap while brushing our teeth.
- 20- We turn off the lights when we leave a room.



EARTH DAY WRITING

Trace and write about ways that you can care for the earth.

Reduce Reuse Recycle



I can reduce by

Handwriting practice lines for the 'Reduce' section.

I can reuse by

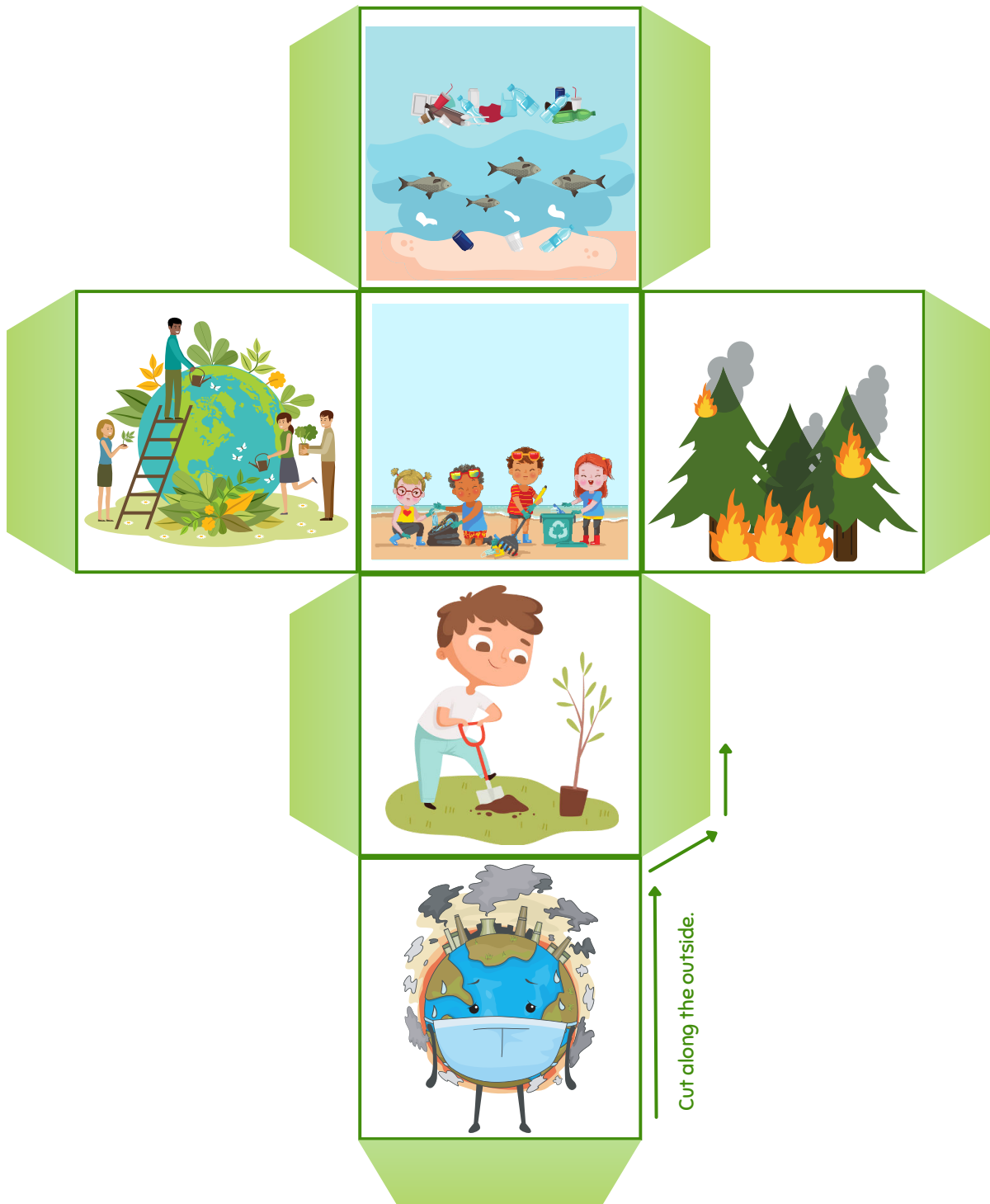
Handwriting practice lines for the 'Reuse' section.

I can recycle by

Handwriting practice lines for the 'Recycle' section.

EARTH DAY DICE

Create your own story by rolling the dice. Cut along the outside. Fold in the flaps. Secure with tape.





EARTH DAY

APRIL
22

What can you do to protect Earth?
Draw and write

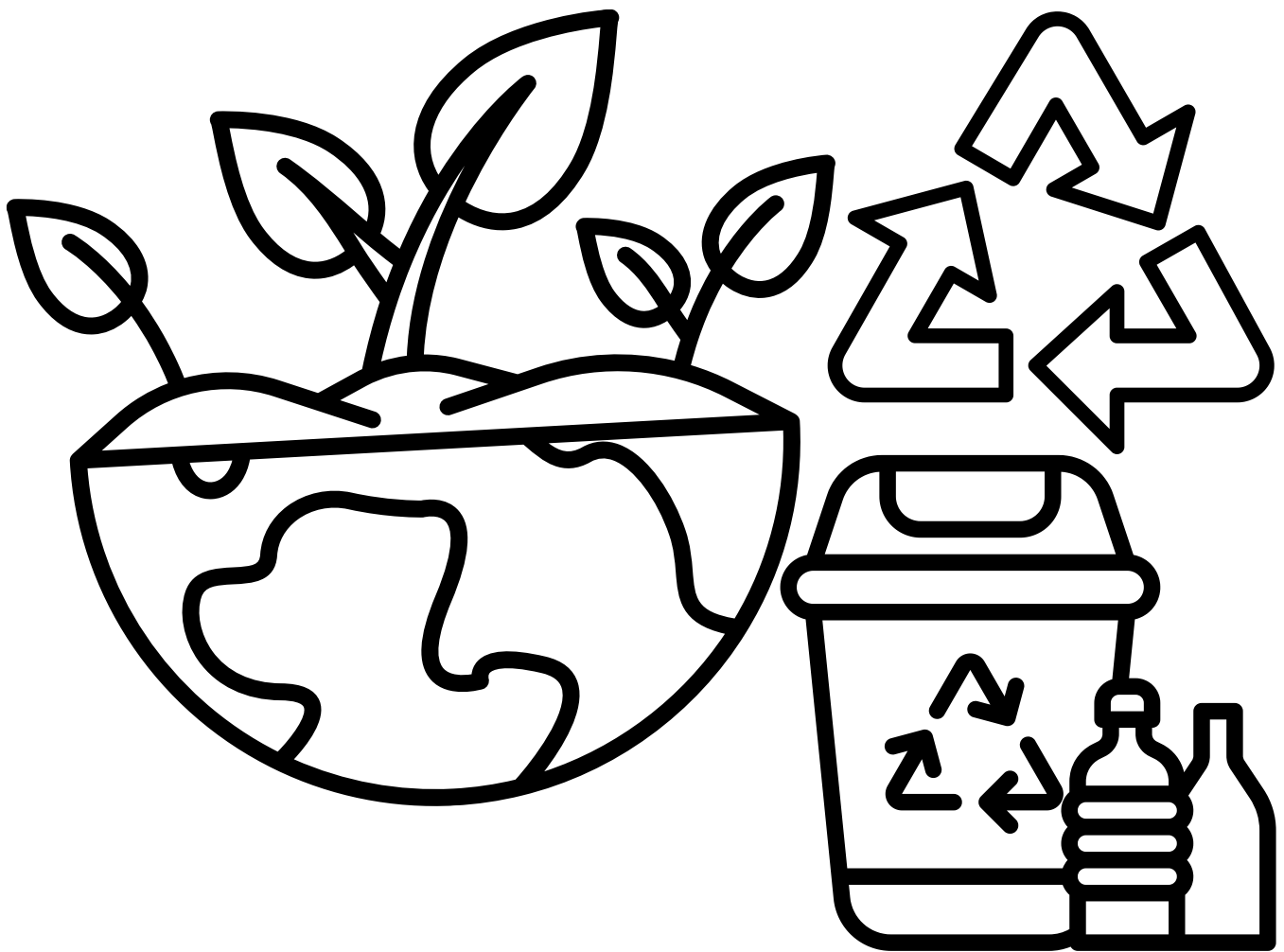
I can save

I can reduce

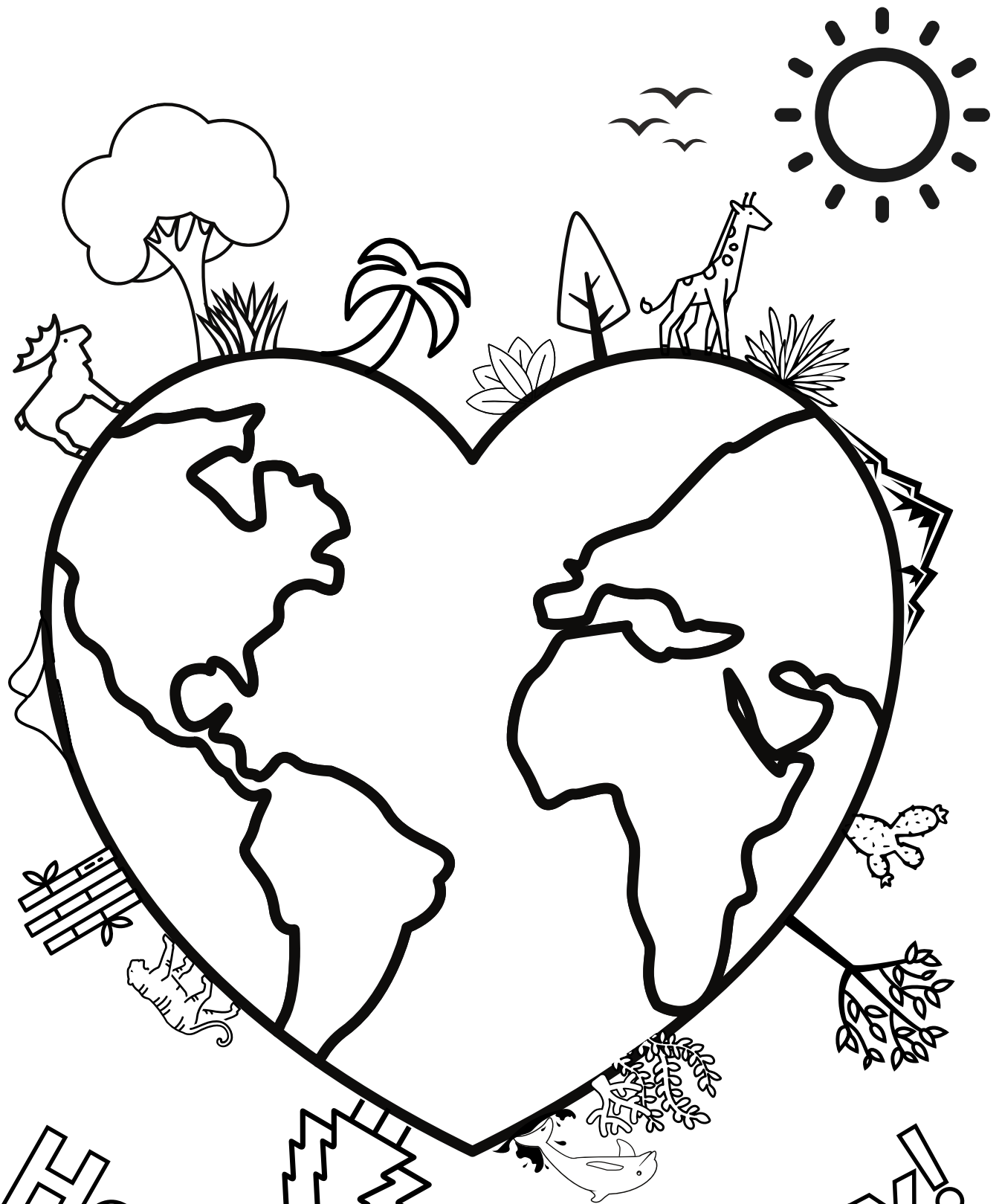
I can reuse

I can recycle

HAPPY EARTH DAY!



reduce.reuse.recycle



Happy Earth Day!